

## COPRIMURO QUADRATO

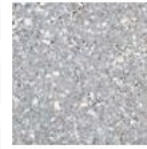
lunghezza cm 100 in cemento superlevigato colorato e idrofugato

1 pezzo per ML

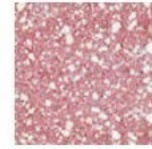
I prezzi si intendono al netto della vigente IVA



| ART. | MIS. INT. | Peso per pz. | PEDANA |    | COSTO IN € PER ML |                 |             |
|------|-----------|--------------|--------|----|-------------------|-----------------|-------------|
|      | Cm        |              | Kg     | ML | Pz                | GRIGIO PERLACEO | ROSSO TERRA |



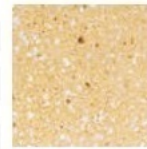
GRIGIO PERLACEO



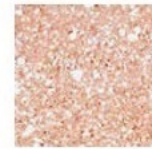
ROSSO TERRA



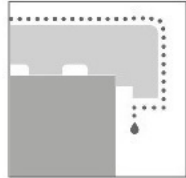
BIANCO ROCCIA



GIALLO TUFO



SALMONE CHIARO

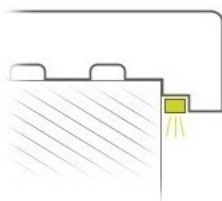


SISTEMA ROMPIGOCCIA per evitare il gocciolamento sui muri

|  |           |      |      |    |    |  |  |  |
|--|-----------|------|------|----|----|--|--|--|
|  | CMU-EV/01 | 11,5 | 15,0 | 76 | 76 |  |  |  |
|  | CMU-EV/08 | 14,5 | 16,2 | 76 | 76 |  |  |  |
|  | CMU-EV/02 | 16,5 | 18,1 | 76 | 76 |  |  |  |
|  | CMU-EV/09 | 19   | 19,0 | 57 | 57 |  |  |  |
|  | CMU-EV/03 | 22   | 20,6 | 57 | 57 |  |  |  |
|  | CMU-EV/06 | 24   | 22,5 | 57 | 57 |  |  |  |
|  | CMU-EV/04 | 27   | 25,5 | 57 | 57 |  |  |  |
|  | CMU-EV/05 | 32   | 28,3 | 38 | 38 |  |  |  |
|  | CMU-EV/07 | 37   | 31,1 | 38 | 38 |  |  |  |

## SISTEMA LED INTEGRATO

su richiesta



| ART.    | DESCRIZIONE   | COSTO IN € PER ML * |
|---------|---|---------------------|
| CMU-LED | Fresatura incasso alloggio canalina in alluminio per integrazione sistema led |                     |

\* lavorazione eseguita su 1 lato